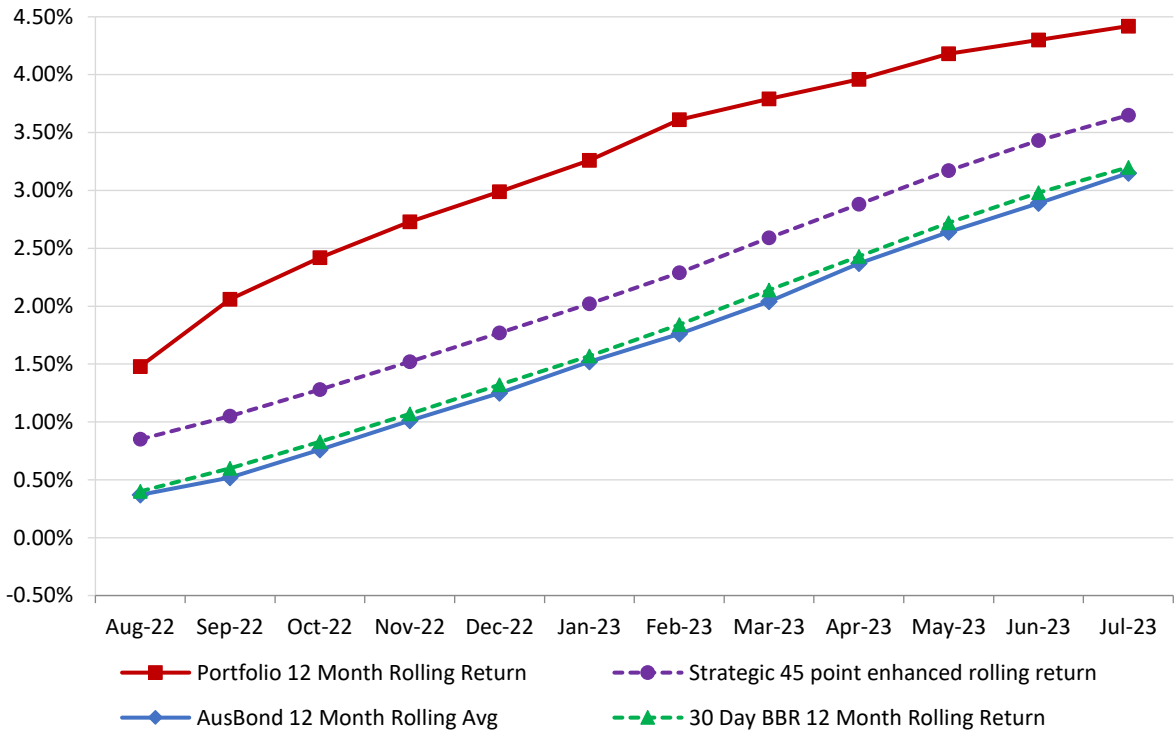


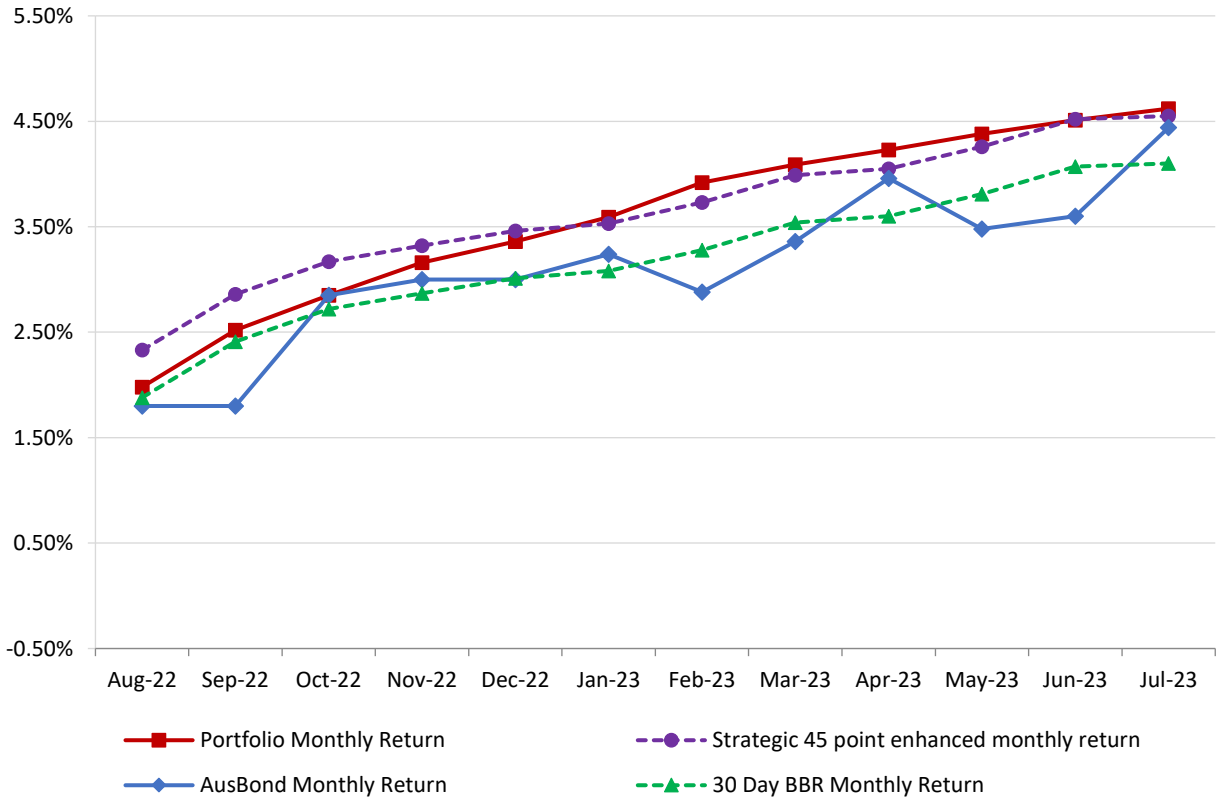
Attachment B

**Investment Performance
as at 31 July 2023**

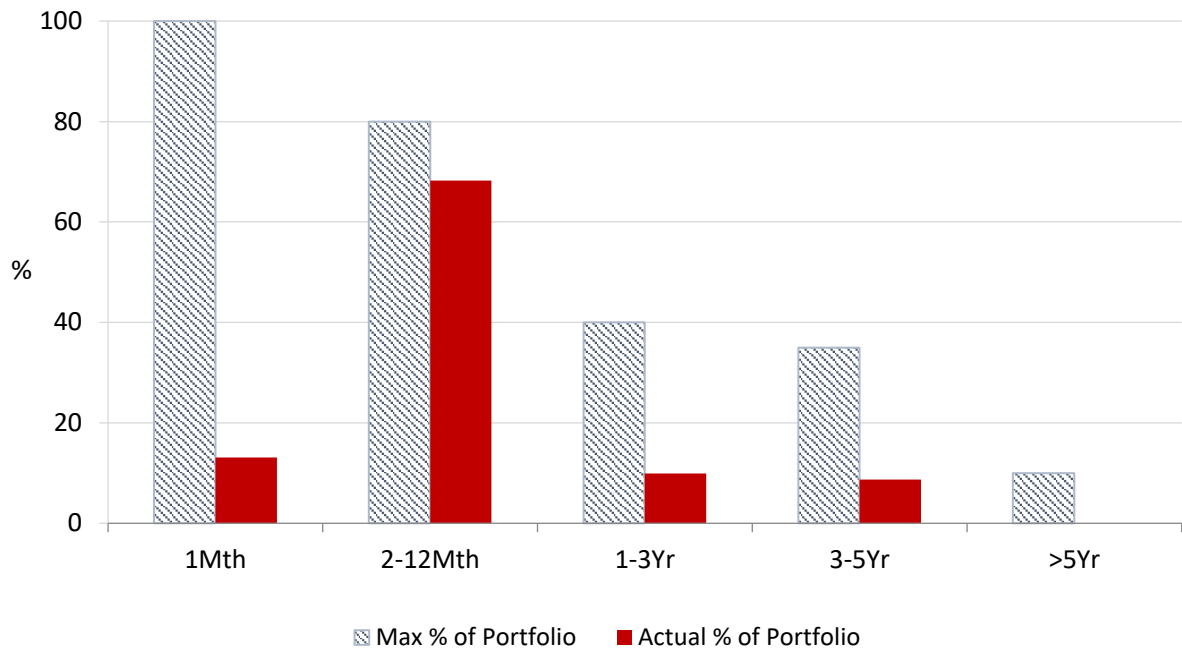
12 Month Rolling Averages
Actual Portfolio vs Strategic Enhanced Benchmark vs AusBond Benchmark vs 30 Day BBR Benchmark
July 2023



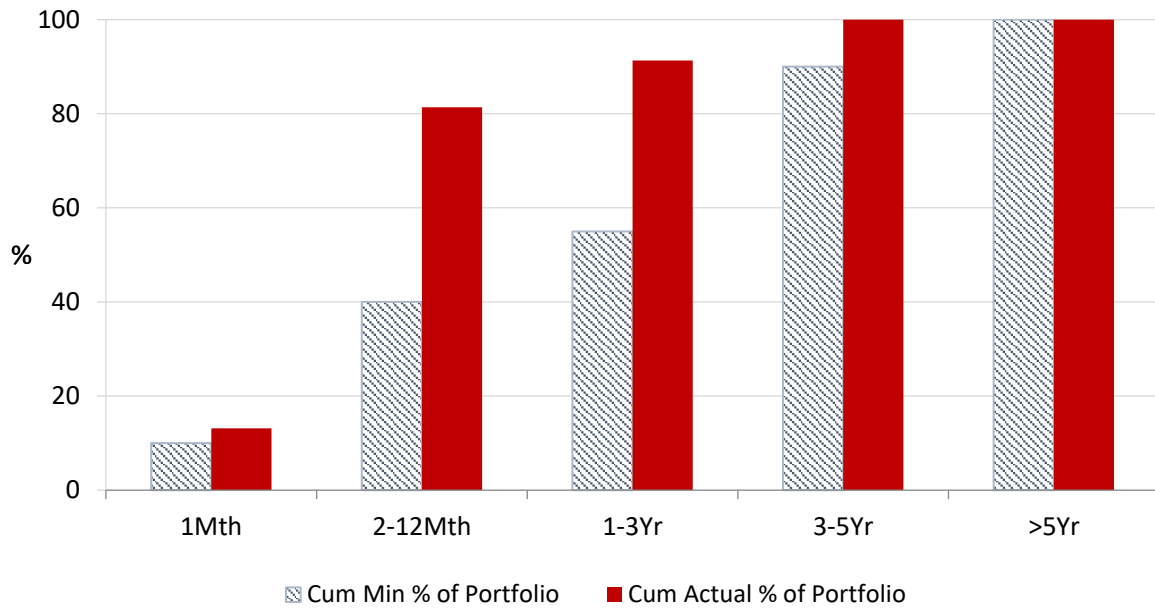
Monthly Results
Actual Portfolio vs Strategic Enhanced Benchmark vs AusBond Benchmark vs 30 Day BBR Benchmark
July 2023



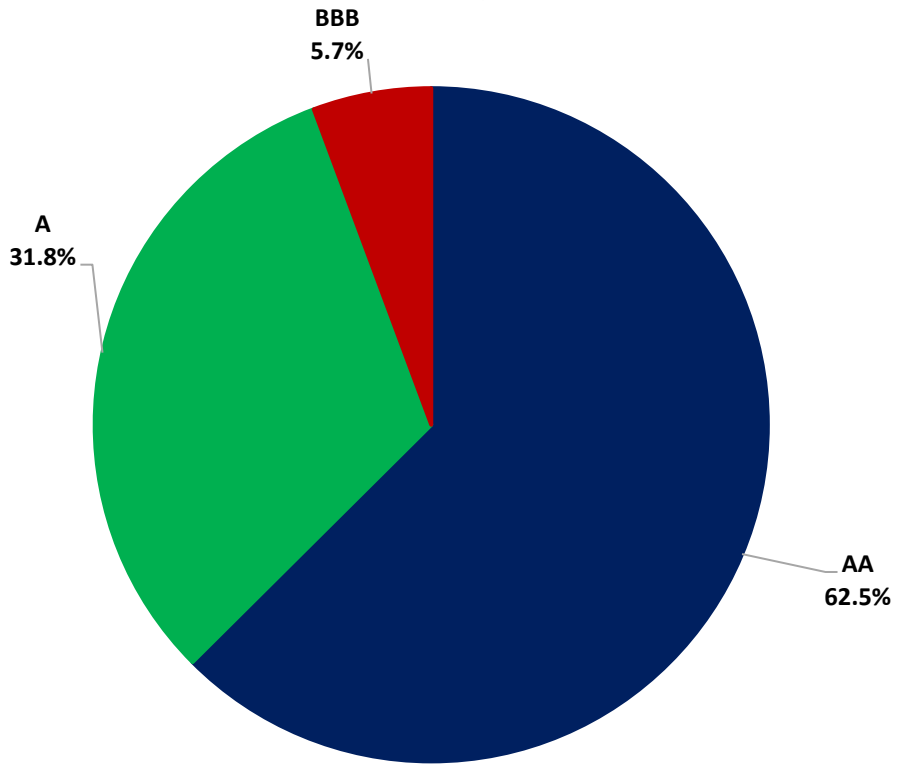
Portfolio Liquidity - Maximum Allowances as at 31 July 2023



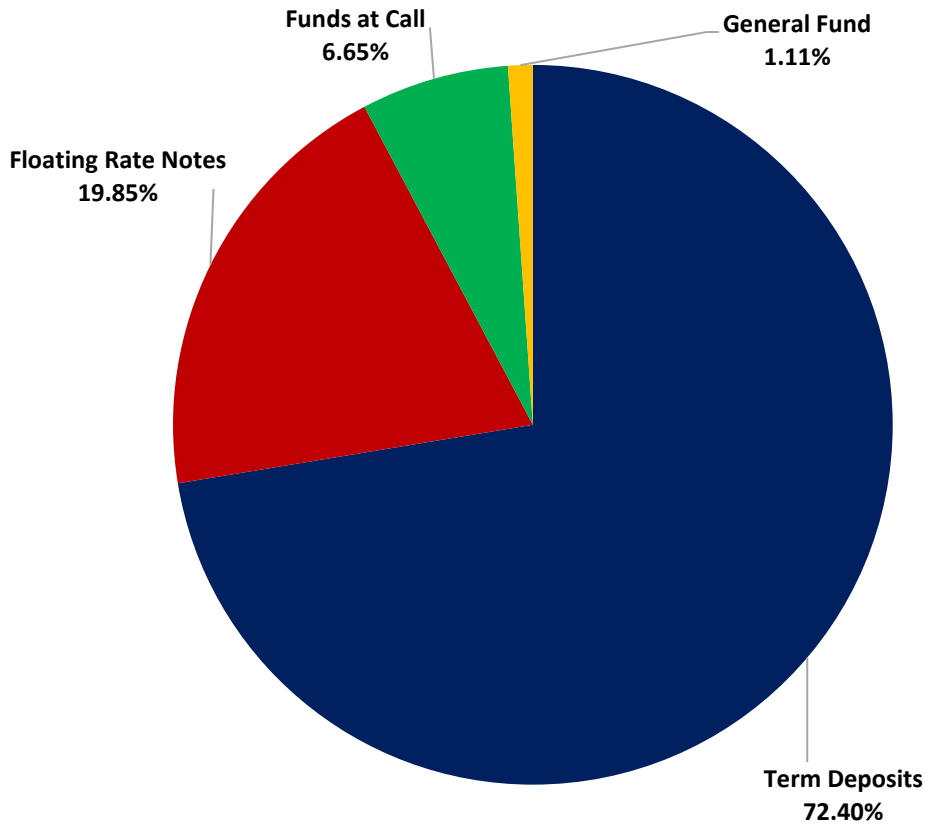
Portfolio Liquidity - Minimum Allocations as at 31 July 2023



Risk Profile as at 31 July 2023



Risk Profile as at 31 July 2023

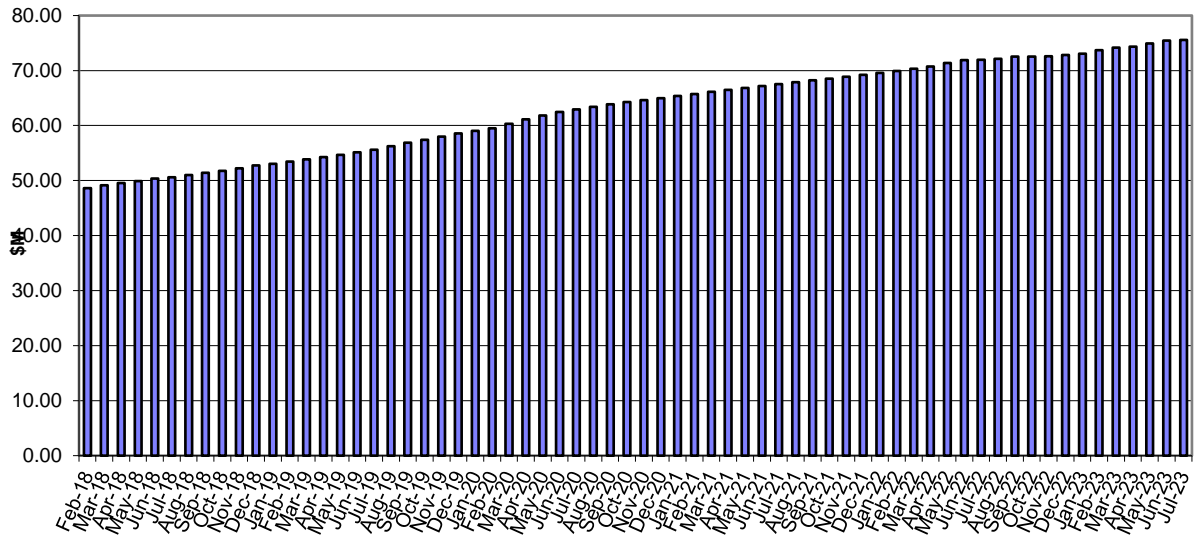


INVESTMENT AND CASH DISTRIBUTION BY FINANCIAL INSTITUTION

as at 31 July 2023

Institution Category	Financial Institution	Amount \$M	Financial Inst. %	Institution Cat. %
Australian Big 4 Bank (and related institutions)	ANZ Bank	21.0	2.9	
	Commonwealth Bank	169.5	23.6	
	National Australia Bank	68.9	9.6	
	Westpac Banking Corporation	179.9	25.0	
Big 4 Total		439.2		61.2
Other Australian ADIs and Australian subsidiaries of foreign institutions	Bank Australia Limited	9.5	1.3	
	Bank of Queensland	38.0	5.3	
	Bendigo & Adelaide Bank	64.5	9.0	
	Great Southern Bank (formerly Credit Union Australia)	6.5	0.9	
	ING Bank	75.0	10.4	
	Suncorp Bank	58.3	8.1	
	Macquarie Bank Ltd	10.0	1.4	
	Northern Territory Treasury Corporation	10.0	1.4	
Newcastle Permanent Building Society	7.3	1.0		
Other ADI Total		279.0		38.8
Grand Total		718.2	100.0	100.0

Cumulative Outperformance over AusBond Benchmark - 2016-2023



Cumulative Outperformance over 30 Day BBR Benchmark - 2016-2023

